

Newsletter #6

MESSAGE FROM THE CHAIR

June 2022

Dear Members and Supporters,

On Commonwealth Day 14 March, the Governor-General and Mrs Hurley hosted an event at Government House to celebrate Commonwealth Day and to mark Her Majesty The Queen's Platinum Jubilee. This event was also the occasion for the unveiling of The Fund's newly commissioned sculpture – *Coming Together, Moving Forward, Standing Tall*, a collaboration between Adam Humphreys, sculptor and BackTrack Youth Works, the makers of the sculpture.



The sculpture is of a kangaroo and emu, the iconic pair representing Australia's coat of arms – a key theme in our Collection which also has diverse artworks depicting emus and kangaroos – from William Byrne's 1773 engraving of the newly discovered 'Kanguroo' – a public and scientific sensation, to the silver emu atop an emu egg inkwell made by silversmith William Edwards in 1865.

There are dot circles on the kangaroo's flank representing the meeting places – Canberra and Armidale. The wavy lines that join them together are the journey of Government House in Canberra reaching out to BackTrack in Armidale, and BackTrack coming down to Canberra with the sculpture. The larger dot circles are Canberra and the smaller ones represent Armidale. The emu has dot circles that represent 'meeting place' these designs were created after discussions with local Indigenous artist, Larissa Ahoy.

The Fund makes special efforts to acquire works which represent the lives of Vice-Regal residents. Their Excellencies have been Patrons of BackTrack Youth Works since 2016 when the Governor-General was then Governor of NSW and their active involvement with the group is testament to their support for BackTrack's mission – *'To help as many young people having a hard time as possible.'*

There was a wonderful atmosphere at the unveiling, by the Governor-General, Adam Humphreys and myself, because of the presence of the young boys and girls from BackTrack who had bent, shaped and welded the steel to make the kangaroo and emu forms. They were very happy to talk about how the sculptures were made, and what the project meant to them – so proud and quietly thrilled to see their kangaroo and emu in the gardens of Government House.

This sculpture represents a defining theme of Their Excellencies' term of office – their commitment to supporting the Australian community, especially through the ravages over the last few years of bushfires, floods and pandemic.

How wonderful that this occasion was a celebration of the Platinum Jubilee of Her Majesty Queen Elizabeth II. This work is now forever linked to this milestone, just as The Fund's Clement Meadmore sculpture, *'Up'*, commemorates the Centenary of Federation.

I would like to acknowledge the generosity of the many donors – The Fund's Members and Supporters, who funded this important acquisition. We are still appealing for support to fund this acquisition. We just need an additional \$430 to reach our target.

Newsletter #6

On the 31 May, a very cold and wintry day, The Fund's second new sculpture **VAJRASANA Meditation**, was unveiled indoors by the Governor-General, the sculptor Margaret Worth and myself. Generously presented by Margaret Worth to The Fund, the work has been installed in a clearing facing Lake Burley Griffin where the reflective metal panels catch the light.

After the indoor unveiling formalities, we ventured outside to view the imposing work which is set in a location which will now be part of extended public access to the grounds on open days. Indeed, the Governor-General spoke of his enthusiasm for developing a sculpture trail in the grounds of Government House, which aligns with The Fund's identified priority for acquiring sculpture for the Collection, particularly for the expansive landscapes and vistas of Government House.

An important theme in The Fund's Collection is the recognition of the contribution of women to



public and artistic life – significant stories increasingly evident in arts and culture. Margaret is an established artist and sculptor and was represented by her abstract paintings in the National Gallery of Australia's exhibition *Know My Name: Australian Women Artists 1900 – Now, Part 1*. So of course, we were delighted when Margaret, encouraged by Lara Nicholls, curator National Gallery of Australia, offered to give *VAJRASANA Meditation* to The Fund. The work is an exemplar of Margaret's renowned environmental art and this sculpture won the Non-Acquisitive Award, Lorne Sculpture Biennale in 2018.

Indeed, there is a closer link between this work and The Fund's Collection. As mentioned above, in 2000, The Fund acquired two important sculptures to mark the Centenary of Federation in 2001 – Inge King's *Moonbird* on display at The Lodge and Clement Meadmore's *Up*, on the Vista Lawn at Government House.



Of note is the fact that in 1973, Clement Meadmore, then based in New York, asked Margaret to take over teaching his class in 3D design at the prestigious Parsons School of Design. Margaret's response: '...I jumped at the chance. It was for one year and valuable in developing my sense of space and placement.' Margaret's imposing work, reflects her love of the physical world, her appreciation of pure mathematics and her fascination with the effects of movement and sound.

It is very exciting that, in the first five months of this year, The Fund now has two new sculptures on display in the grounds of Government House, especially given that sculpture is an identified priority for acquisition.

Newsletter #6

3rd *Narratives of Nations*: the online symposium Begins on Wednesday 6 July, 2022

The program for this online symposium is confirmed. Each session will be from 6 – 7pm on the first Wednesday of the month. These will be presented on zoom with the capacity for questions and discussion at the end of the presentations. Many of you will have attended The Fund's 2021 AGM on zoom so appreciate that there is an immediacy with online presentations despite the technology!

No 1: Wednesday 6 July: Jennifer Sanders: *The Governor-General's Xylotheque*

No 2: Wednesday 3 August: Margaret Betteridge: *Ruth Lane-Poole – A Woman of Influence*

No 3: Wednesday 7 September: Dr Andrew Montana: *From International Exhibitions to Ruth Lane-Poole's Federal Capital commission: W. H. Rocke and Co. and the crafting of taste and tradition with Australian timbers in Melbourne and Canberra.*

NOTE: The Australiana Fund AGM in Adelaide 9 – 11 September 2022

No 4: Wednesday 5 October: Dr Catriona Quinn: *The Emergence of the Australian Interior Designer: Craft, Commerce and Interdisciplinary Practices: 1920 – 1945*

No 5: Wednesday 2 November: John McPhee: *Australian timbers: a history of their use in cabinetmaking.*

All the speakers are delighted to be part of the 3rd *Narrative of Nations* symposium after the disappointment of the Covid cancellation in 2021. We look forward to welcoming you to the presentations through July to November 2022. Details re online registration – the presentations are free – and more information will be circulated soon and, be available on The Fund's website. <https://www.theaustralianafund.org.au/events>

The Fund's 2022 AGM in Adelaide and the Barossa Valley: Friday 9 – Sunday 11 September 2022

Last but certainly not least – Alan Smith and his Committee are organising a not-to-be-missed AGM starting in Adelaide with excursions to the Barossa Valley and Anlaby Station. Alan has expanded on the details of this much anticipated gathering – our first since Sydney in 2019 – later in the Newsletter.

See you online and in Adelaide!

Best wishes



Jennifer Sanders
Chair

The Australiana Fund

Newsletter #6

Update on The Collection



In February, The Fund acquired by gift, a desk top sculpture of 'The Right Honourable Sir Robert Gordon Menzies PC KT AK CH FAA FRS QC' by Croatian born, Australian sculptor Ante Dabro.

It is one of twelve busts commissioned c.1990 by the Liberal Party of Australia and was awarded to Mrs Gillian Storey AM, in recognition of distinguished service.

Ante Dabro is a graduate of the Academy of Fine Arts, Zagreb. He lectured in sculpture at the ANU School of Art from 1971–2004. He is one of the major exponents of figurative sculpture in Australia and has worked on many commissions, including the Royal Australian Navy Memorial on Anzac Parade in Canberra (dedicated by Her Majesty Queen Elizabeth II on 3 March 1986) and the La Pérouse Memorial in Paris.

Dabro was the recipient of the 1982 Churchill Fellowship, and was commissioned in 2001 by the Winston Churchill Trust to sculpt a bust for the grounds of Churchill House, on campus at the Australian National University

Project to upgrade the Collection Care Manuals

The Collection Care Manuals were first introduced into each Official Residence in 2012. During our extensive assessment of The Collection in 2019/20 we realised that a number of new practices for the care and handling, particularly of furniture, have come into use and a few of the products previously recommended on the technical templates have been discontinued. With the help of Patination's Conservation Services, we sourced suitable and easily obtainable replacements. In turn, it provided a good opportunity to upgrade the manuals with new care and handling guidance.

As before, each artwork in each House has a colour image, a caption and research information providing the Household with its history, provenance and where possible, interesting talking points. On the reverse of each page is a template outlining care and maintenance practices for that artwork. It was decided to rewrite these templates to suit the different media represented in The Collection rather than each individual artwork. This will make future updates easier.

Over the Christmas period, Fine Art Advisor, Sonya Abbey concentrated on rewriting and reformatting all the technical care templates pages by medium

48 Works on paper	42 Silver & metalware	28 Objects of art	124 Furniture	24 Pictures
57 Ceramics	25 Books	4 Textiles	15 Sculptures	6 Clocks

Fund Assistant, Julieanne Watson, worked on sourcing new researching and cross-checking dates and details with our museum-grade online database, eHive. Aply assisted by ANU student, Lydia Stevenage, all pages were proof read, printed and laminated, then collated by House and bound ready for delivery to each House Manager. In addition, The Fund Office has kept a Manual relating to all artworks currently on outward loan to other institutions or in storage – these are paired with the relevant care template and are ready for laminating and distribution when they move back into one of the Residences.

Newsletter #6

Annual General Meeting, Adelaide, 9 – 11 September 2022

The programme of events is very close to completion and we hope to have details circulated to Members very soon. All events will be open to Australiana Fund Members and their guests. It is a wonderful opportunity to showcase The Fund and to encourage new members to join, so please feel free to bring along friends, family or colleagues who may enjoy the programme.

The Official Meeting will take place in Adelaide on the morning of Friday 9 September at The Queen Adelaide Club - there will be an opportunity for Members who cannot attend in person to take part via Zoom.

We will then be staying on at The Queen Adelaide Club for lunch after which we will be taken by coach to a private view of the beautiful heritage listed house and garden of Fund Member and former Fund Councillor, Deborah Hamilton in North Adelaide.

In the evening there will be an elegant Reception (venue TBC) followed by a few minutes stroll to the Members' Annual Dinner at The Adelaide Club.

On Saturday 10 September, the entire day will be spent in the Barossa Valley. Travelling by coach to Barossa Cellars where we will commence with morning tea and a talk on the history of winemaking in the Valley by one of the eminent Barossa Barons. Following a tour, there will be lunch and a talk by a winemaker at the historic Yalumba Estate. We will also have privileged access to normally private areas of this significant estate.

Finally, we will move on to the extraordinary Seppeltsfield Estate for a tour of the heritage buildings, the gallery and workshops of the JamFactory design centre with a range of special speakers. Over the past decade this iconic estate with its exquisite array of 19th century buildings has been meticulously restored and revitalised. We encourage members to travel by coach for this Barossa journey rather than by car as throughout the day there will be a number of wine tastings, including of century old fortified wines - heritage in a glass! We will return to Adelaide in time for an evening at leisure. A list of recommended restaurants will be provided. Though given the lavish hospitality of the preceding two days, some members may prefer to relax in their hotel with room service.



On Sunday 11 September, we will return to Anlaby Station, the charming home and working Merino station of Fund Members, Andrew Morphett and Peter Hayward. It is eight years since The Fund first visited and many more of the historic buildings and features of the gardens and grounds have been restored. Following a tour of the beautiful

house and garden we will enjoy lunch and afternoon tea before returning to Adelaide in the late afternoon. There will be an option for members to be able to be taken by one of the coaches directly to the airport from here if they wish.



Newsletter #6

A Private Tour of The Chau Chak Wing Museum

On 26 May the NSW Committee organised our first event since Covid restrictions had forced the cancellation of a number of planned fundraising events.

All Fund Members and NSW supporters were invited to this exciting evening – 54 tickets were sold and we were treated to a private tour conducted by the Director Paul Donnelly and senior staff of the Chau Chak Wing Museum, including former Fund Councillor Ann Stephen.



It was a fascinating insight into this innovative and impressive building which allows Sydney University's extensive collections to be shown under one roof. Located in the heart of the University of Sydney, the Museum was designed to share the University of Sydney's vast collections with the broader community in a stunning, purpose-built space.



The collections began with the Nicholson Collection of antiquities in 1860 and continued to grow to include the Macleay Collections of natural history, ethnography, science and historic photography, and the University Art Collection. Designed by Johnson Pilton Walker, the Museum unites these diverse collections in one multidisciplinary institution.

While the collections themselves aren't new, being able to see them this way is. From ancient Rome, Greece and Egypt, to the art of First Nations people, and the works of leading contemporary artists, the Chau Chak Wing Museum triples the exhibition space previously available. 70 per cent of the items on display have not been seen publicly for over 20 years.

The event culminated with a wonderful opportunity to socialise on the beautiful terrace with drinks and canapes – it was so nice for everyone to finally catch up in person.

We raised a total of \$4,425.00 from ticket sales and all profit will go towards future acquisitions and conservation of The Australiana Fund Collection.

EVENTS FOR 2022

- Online.-. **Beginning 6 July Online Symposium**- check our website for updates
- SA - **Annual General Meeting & Program of Events, 9-11 September 2022** – including a tour in the Barossa Valley, some wonderful private viewings, a Vice Regal reception and a return to the ever-evolving gardens and restorations at Anlaby Station.
- NSW - A guided walking tour of The Rocks and Millers Point, early November 2022. Millers Point Heritage Consultant, Anne Warr will take the group on a 3-hour (approx.) exploration of 5 colonial era houses, finishing up at the Hero of Waterloo, one of Sydney's oldest hotels. There will be a tour of the historic hotel basement with drinks afterwards and participants can book for dinner at the hotel to round off the evening.
- VIC - A visit to the historic property of Coriyule, Curlewis on the Bellarine Peninsula. Dates to be confirmed.

COMING SOON The Australiana Fund Raffle 2022

We are currently gathering prizes for our next national Raffle. Due to be launched in late October and drawn before Christmas – prizes will range from works of art, homewares, antiques and a travel experience that relate to The Fund's Collection or are of historical interest.

END OF FINANCIAL YEAR

We invite you to support The Australiana Fund by making a tax-deductible donation* before 30 June 2022.

Since 1978, The Australiana Fund's members and supporters have contributed more than \$10 million to support collection acquisitions and preservation as well as initiatives to promote the collection to a wider audience. The Fund's Collection continues to grow as a visual expression of our nation's distinctive cultural and contemporary creativity.

Please use the form at the end of this newsletter.

*Donations to The Australiana Fund of \$2 or more are tax deductible a receipt will be issued by email (or post if requested)

We are currently looking for support for the following projects:



Acquisition of the Munro Ferguson Collection

A collection of 82 timber samples with provenance to The Right Honourable Sir Ronald Craufurd Munro Ferguson GCMG PC, Australia's 6th Governor-General.



40th Anniversary Acquisitions Fund

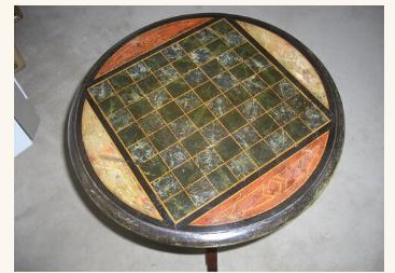
This is an ongoing appeal. To date we have acquired a rare gold medal commemorating the first opening of the Australian Parliament, 9 May 1901.

Conservation Projects

This is an ongoing appeal to maintain the 'working collection' in the four Official Residences.



Before conservation



After conservation

Contributors, December 2021

Jennifer Sanders, Chair.
Caroline Johnston OAM, Councillor, Vic.
Julianne Watson

Sonya Abbey, Fine Art Advisor
Alan Smith, Councillor, SA.

WAYS TO DONATE

Donations can also be made by credit card over the phone:
(02) 9994 8034 Mon - Tues & Thurs-Fri from 10 -4pm

Or through our website - <https://www.theaustralianafund.org.au/supportus>

Or click: [**DONATE NOW**](#)

If returning this form by Mail – please mail to:
The Fine Art Advisor, PO Box 906, Maroubra NSW 2035

This form can be printed, scanned and returned to The Fund by email to
austfund@bigpond.net.au

TO DONATE BY VISA / MASTERCARD

I would like to donate \$

Name on the
Card:.....Telephone:.....

Signature:.....

Email
Address:.....

Card number:
.....Expiry:.....

TO DONATE BY EFT

Please mark your deposit with “First Initial Surname Donate” E.g. “JSmithDonate”

NAB BSB: 083 088 a/c: 767550438 In the name of The Australiana Fund

Email
Address:.....